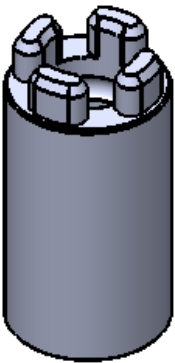
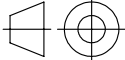


REVISIONS			
Zone	Rev.	Description	Date
A	1	Pins height has decreased. Was 10mm	29.08.2018



- Technical requirments:**
- Outer surface finish: Polished
  - Not indicated dimensions according 3D drawing: "ENT.6937.00.05\_Male Spline\_2018.08.29.STEP"
  - 2D Drawing valid only together with 3D Step file.

Not indicated tolerances by ISO 2768-fK					Mass (g)		Material: 304 Stainless Steel										
							Finish: Polished										
		Scale		Drawn		A. Šimanel		08-29		Title:  <div>Male Spline</div>							
		2:1		Chkk'd													
2018		A3															
				Appv'd													
				Entech Group						Drawing No.:				Sheet		Sheets	
										ENT.6937.00.05-1				1		1	
All dimensions in millimeters (mm)																	